

2009 ROSTER

No.	Name	Cl.	Pos.	Hometown/High School
1	Kathryn Sutton	Sr.	GK	Coatesville, Pa./Coatesville Area
2	Casey Crowley	So.	D	Hamilton Square, N.J./The Peddie School
3	Jane Voris	So.	D/M	Winnetka, Ill./New Trier
4	Erin Lavery	Sr.	D/M	Huntington, W.Va./Huntington
5	Megan DeGennaro	So.	F	Westlake Village, Calif./La Reina
6	Taryn Boucher	Fr.	M	Cutchogue, N.Y./Mattituck
7	Amanda Citron	Jr.	D	Marshfield, Mass./Marshfield
8	Corinne Collins	Fr.	D	Orinda, Calif./Miramonte
9	Jenna Tryon	Fr.	M	Fairfax Station, Va./South County
10	Julianne Harris	Jr.	M/D	Glenshaw, Pa./Shaler Area
11	Lauren Stoller	Sr.	D	Basking Ridge, N.J./Ridge
12	Christa Matlack	Jr.	F	South Williamsport, Pa./South Williamsport Area
13	Colleen Garrehy	So.	GK	Danville, Calif./Carondelet
14	Kelliann Doherty	Jr.	F/M	Voorhees, N.J./Eastern Regional
15	Emily Trosch	Fr.	M/F	Reisterstown, Md./McDonogh School
16	Sandita McDermott	Fr.	GK	Rhinebeck, N.Y./Red Hook
17	Chelsea Brinkman	Sr.	M	Clearwater, Fla./Palm Harbor University HS
18	Kelsey Johnson	Jr.	D	Monroe, Conn./Masuk
19	Kayla Yee	Fr.	F	Centennial, Colo./Heritage
20	Chelsea McGorry	Sr.	F/M	Charlton, Mass./Shepherd Hill Regional
21	Molly Linhart	Sr.	M	Pittsburgh, Pa./Fox Chapel Area
22	Meghan Fitzpatrick	Fr.	D	Verona, N.J./Verona
23	Caitlin Holtz	Jr.	D	Freehold, N.J./The Peddie School
24	Sadie Canter	So.	M	Dresden, Ohio/Tri-Valley
25	Rosemary Walker	Jr.	M/D	Oakland, Calif./The College Prep
27	Brooke Stokes	Jr.	F	Gladwyne, Pa./The Shipley School

Head Coach: Ben Landis (Bucknell '96), 5th season

Assistant Coach: Laura Kane (West Virginia '05), 1st season

Graduate Assistant Coach: Katie Dry (Bucknell '07), 2nd season

Volunteer Assistant Coach: Jenny Ormsby (North Carolina State '03), 4th season

Captains: Amanda Citron, Molly Linhart, Lauren Stoller

QUICK FACTS

University Information

Location: Lewisburg, Pennsylvania, 17837
Founded: 1846 as the University at Lewisburg
Enrollment: 3,583
Nickname: Bison
Colors: Orange and Blue
Affiliation: NCAA Division I, ECAC
Conference: Patriot League (American, Army, Bucknell, Colgate, Holy Cross, Lafayette, Lehigh and Navy)
President: Brian C. Mitchell
Director of Athletics: John P. Hardt
Associate Director of Athletics/SWA: Amanda Backus

Women's Soccer Information

Head Coach: Ben Landis
Alma Mater: Bucknell '96
Record at Bucknell: 45-28-6 (four seasons)
Career Record: 61-40-10 (six seasons)
Assistant Coaches: Laura Kane (West Virginia '05)
 Katie Dry (Bucknell '07)
 Jenny Ormsby (N.C. State '03)
2008 Record: 11-6-3 (5-2-0 PL)
2009 Captains: Amanda Citron, Molly Linhart, Lauren Stoller
Letterwinners (Starters) Returning/Lost: 19/4 (9/2)
Home Field: Emmitt Field at Holmes Stadium
Surface (Capacity): Grass (1,250)
Press Box Phone: 570-577-2318
Women's Soccer Phone: 570-577-1772
Email: ben.landis@bucknell.edu
Webpage: www.BucknellBison.com
Women's Soccer FAX Phone: 570-577-7698
Women's Soccer Address: Ben Landis
 Women's Soccer Coach
 Bucknell University
 Lewisburg, PA 17837

Athletic Communications

Women's Soccer Contact: Jon Terry
Phone: 570-577-3121
Fax: 570-577-1660
Email: terry@bucknell.edu
 This book was written, designed and edited by the Bucknell Athletic Communications office. Photography by Marc Hagemeyer, Blaine Stiger, Stafford Smith.



What it means to

BE A BISON

“To me, what it means to be a Bison is giving your heart, mind and body to a school that you are proud of, with friends who are like family. It is desire and love for not only your game, but your team, and your school.”

– Senior Midfielder
Chelsea Brinkman

The term “student-athlete” signifies something extraordinary on the campus of Bucknell University.

Being a Bison means that you have the rare blend of physical skills along with the drive and passion needed to succeed at the highest level of collegiate athletics.

Being a Bison also means that you are a scholar first and foremost. You believe that values associated with Division I athletics, such as time management, leadership, teamwork and grace under pressure, are but a part of a well-rounded college experience.

At Bucknell, our students, faculty and staff pride themselves as national leaders in upholding the scholar-athlete ideal that balances a challenging academic program with the demands of successful Division I athletics.

Being a Bison means that you have pledged to be a student-athlete in the purest sense. In doing so, you will be rewarded for a lifetime.

Two-time Academic All-District
selection Lauren Stoller



2008-09
Academic All-District
MARY PAVLOVICH



2008-09
Academic All-District
PL Scholar-Athlete
PL Goalie of Year
ALYSSA DeLORENZ



2008-09
Academic All-District
Arthur Ashe Award Winner
SAM NANA-SINKAM



2008-09
Academic All-District
LAUREN STOLLER



2008-09
Academic All-District
BEN ALLEN



2008-09
Academic All-District
MEGAN HATHAWAY



2008
PL Offensive Player of Year
CONOR O'BRIEN

Bucknell Bison Athletics Setting the Standard of Excellence

Bucknell takes great pride in its commitment to excellence on and off the playing fields. From Presidents' Cups to Academic All-Americans to graduation rates that are ranked annually in the national top-10, Bucknell is clearly at the head of the class when it comes to upholding the scholar-athlete ideal.

- According to federal data released by the NCAA in the fall of 2008, Bucknell's four-year student-athlete graduation rate was second-highest in the nation among student-athletes who entered college between the 1998-99 and 2001-02 academic years. With a four-class average of 89 percent, Bucknell trailed only Davidson (92 percent) among all Division I institutions reporting federal graduation rates (the Ivy League and military academies do not report federal graduation rates). Georgetown, Notre Dame and Holy Cross were also at 89 percent. Bucknell's student-athlete graduation rate is identical to its overall student-body average of 89 percent.
- Bucknell has claimed a league-high 113 Patriot League Scholar-Athletes of the Year since the league's inception as an all-sports conference in 1990-91.
- A total of 366 Bison appeared on the Patriot League Academic Honor Roll in 2008-09 after recording a GPA of 3.2 or better during their sport's competition season. Among all BU student-athletes, 255 made the Dean's List with GPAs of 3.5 or better in the spring of 2009.
- 24 of Bucknell's 27 varsity squads posted team GPAs of 3.0 or better in the spring of 2009.
- In addition to the 117 *ESPN the Magazine* Academic All-Americans produced since 1970, Bucknell has also claimed 276 Academic All-District honorees over the same span, including a school-record 22 in 2008-09.

- With three more Patriot League championships in 2008-09, Bucknell has now earned 73 crowns in 19 years in the league. In addition, Bucknell has had 100 conference players of the year, 83 PL coaches of the year and a whopping 476 individual league champions from sports such as cross country, track & field, swimming & diving, tennis and golf.
- Bucknell has captured the Patriot League Presidents' Cup, signifying the league's all-sports champion, 15 times in the 19-year history of the affiliation, including 11 of the last 12 years. Bucknell claimed the overall and women's Cup standings in 2008-09. It was the 12th straight year and the 15th time overall that the Bison took home the women's title. In 2008-09, Bucknell won Patriot League titles in women's indoor track & field, women's rowing and men's golf. Additionally, the baseball and men's lacrosse teams captured regular-season titles.
- Bucknell ranks FIFTH in the nation (to Nebraska, Notre Dame, Penn State and Stanford) in total number of *ESPN The Magazine* All-America selections.
- A major element in ensuring Bucknell's commitment to athletics excellence is the Kenneth G. Langone Athletics & Recreation Center, which opened fully in 2003. One of the finest collegiate athletics facilities of its kind, the center includes the 4,000-seat Sojka Pavilion, the Olympic class Kinney Natatorium, the Krebs Family Fitness Center and the Berger Family Weight Room. A Hall of Fame area, a display of Bucknell's Medal of Honor recipients, a new Academic All-America wall, a sports medicine suite, modern offices for coaches and staff, and locker room and classroom space are also included in the facility's layout.



2008-09
Academic All-District
SARAH EBRIGHT



2008-09
Academic All-District
PATRICK SELWOOD



2008-09
Academic All-District
SHANNON PITSCHE



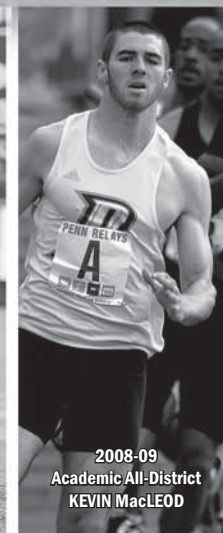
2008-09
Arthur Ashe Award Winner
KYLE ANTHONY



2008-09
Academic All-District
CHELSEA BRINKMAN



2008-09
Academic All-District
CHRIS YAMAGUCHI



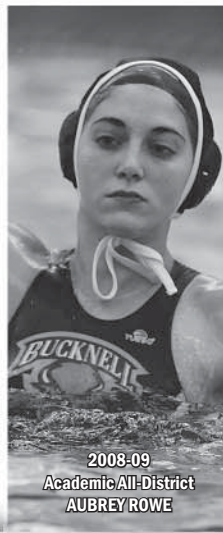
2008-09
Academic All-District
KEVIN MACLEOD



4x Patriot League Boat of the Year Member
PAGE KANNOR



2008-09
Academic All-District
KEVIN MULLEN



2008-09
Academic All-District
AUBREY ROWE



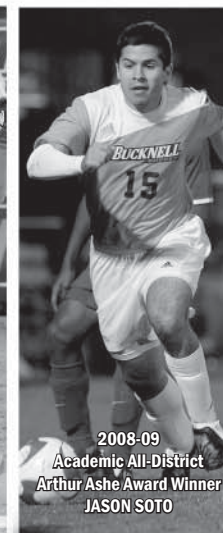
2008-09
Academic All-District
JON LOCKHART



2008-09
Academic All-District
PL Offensive Player of Year
JENNIFER DERVARICS



2008-09
Academic All-District
ASHLEY CARLSON



2008-09
Academic All-District
Arthur Ashe Award Winner
JASON SOTO

Bucknell Bison Athletics

A National Model in Promoting the Scholar-Athlete Ideal

Bucknell Athletics is first and foremost a student-centered organization, one that strives to be a national model when it comes to operating by a true scholar-athlete model. At Bucknell, student-athletes' academic programs are their first priority, and providing a competitive Division I athletics program only advances the mission, values and residential learning goals of the university. To that end, the Department of Athletics and Recreation proactively seeks ways to assist student-athletes in their daily academic pursuits. Below are just some of the student-athlete support programs currently in place.

FACULTY ATHLETICS REPRESENTATIVE: The faculty athletics representative (FAR) is a member of the faculty or administrative staff who is designated to represent Bucknell in its relationships with the NCAA and the Patriot League. Bucknell's FAR is Mitch Chernin, Professor of Biology. The FAR can enhance the student-athlete experience by promoting a balance between academics, athletics and the social lives of student-athletes, which affords them opportunities to enjoy the full range of collegiate experiences available to students generally.

SIDELINE COACH PROGRAM: This program is a truly unique initiative in Division I college athletics, and it involves the invitation of a member of the faculty, administration, staff or community by one of Bucknell's 27 varsity teams. The participant has the opportunity to discuss the overall program with the respective coaching staff, including practice preparation and strategy for the upcoming contest. The sideline coach attends a practice session and an actual intercollegiate competition, where he/she is introduced to the team and gains rarely seen insight into the relationships that exist between player-coach and player-player. The purpose of the Sideline Coaches Program is to foster a better understanding by the faculty and administration of the roles played by coaches and athletes in the university's competitive intercollegiate athletic arena.

ACADEMIC ENHANCEMENT CENTER: In the Fall of 2005, the Department of Athletics opened a study/computer lab for student-athletes on the concourse level of Sojka Pavilion. The center is outfitted with computers, a laser printer, four television monitors and a projection unit with computer, VCR and DVD player. Additionally, the study lab can be used as a meeting place for group projects, tutorial area or just a secluded and quiet study space before or after practice.

LAPTOP PROGRAM: The Department of Athletics owns a number of laptop computers that may be signed out by student-athletes for use on away trips.

STUDENT-ATHLETE ADVISORY COMMITTEE (SAAC): Representatives from each varsity team comprise the SAAC, which is designed to enhance the total student-athlete experience by promoting opportunity, protecting student-athlete welfare, and fostering a positive student-athlete image. The Committee is an invaluable resource for promoting communication between athletics administration and student-athletes; promoting communication between athletics and campus-wide administration; providing feedback and insight, as well as soliciting responses into department issues and proposed NCAA legislation; building a sense of community within the athletics program involving all athletics teams; organizing community service projects and efforts; creating a vehicle for student-athlete representation on campus-wide committees; serving as a collective voice of campus student-athletes; and disseminating information to the student-athlete body.

OTHER PROGRAMMING: The Department of Athletics, through the identification of outside speakers and periodic "Brown Bag Luncheons," thrives to enhance the quality of the student-athlete experience as well as to educate student-athletes on a variety of issues that may affect them throughout their collegiate career. Some recent topics of interest have been alcohol, nutrition, body image, hazing, sexuality, diversity, career development, study skills, religious life and gambling.



2008-09
Academic All-District
ASHLEY BEANS



2008-09
Academic All-American
CHRIS HENNINGS



2008-09
Academic All-District
GILLIAN NORDQUIST



2009
PL Player of Year
ANDREW COHEN



2009 Outdoor
PL Field Athlete of Year
AMY MANTUSH



2008-09
Academic All-District
ANDREW BROUSE



2009
PL Defensive Player of Year
BILLY HAIRE

This is Bucknell

Bucknell University is one of the top liberal arts colleges in the nation. Our academic programs encompass:

- ▶ The traditional liberal arts disciplines—arts, humanities, natural sciences and social sciences.
- ▶ Professional programs in accounting, management, education, engineering and music.
- ▶ Preprofessional programs in law and medicine.

With more than 3,500 undergraduates and nearly 150 graduate students, we combine the personal attention of a small college with the resources of a large university.

THE CAMPUS: BEAUTIFUL AND CENTRALLY LOCATED

- ▶ More than 100 facilities for learning, living and recreation.
- ▶ Recent additions: music building, residence hall, geology/psychology building, engineering building and athletics center. Phase III of the West Fields Complex features an all-chairback-seat covered grandstand, press box and support facility for Graham Field and Varsity Soccer Field.
- ▶ Approximately three hours from Baltimore, New York, Philadelphia and Washington D.C.

ACADEMICS: BROAD LEARNING OPPORTUNITIES

- ▶ More than 50 majors leading to bachelor of arts, bachelor of science, bachelor of engineering, bachelor of science in education, bachelor of science in business administration or bachelor of music.
- ▶ **Arts & Sciences Departments and Programs:** Animal Behavior, Art and Art History, Biology, Cell Biology/Biochemistry, Chemistry, Classics, Comparative Humanities, Computer Science, East Asian Studies, Economics, Education, English, Environmental Geology, Environmental Studies, French, Geography, Geology, German, History, International Relations, Latin American Studies, Management, Mathematics, Music, Neuroscience, Philosophy, Physics and Astronomy, Political Science, Psychology, Religion, Russian, Sociology and Anthropology, Spanish, Theatre and Dance, Women's and Gender Studies.
- ▶ **Engineering Departments:** Biomedical, Chemical, Civil and Environmental, Computer Engineering, Computer Science and Engineering, Electrical, Mechanical.

THE FACULTY: FOCUSED ON STUDENTS

- ▶ More than 330 full-time faculty.
- ▶ More than 95% of faculty members hold doctoral degrees.
- ▶ Undergraduate learning is highest priority.
- ▶ Faculty members are active scholars who conduct research, produce creative works and publish their findings, often in collaboration with students.

UNDERGRADUATE RESEARCH

- ▶ Students conduct research in the lab and off campus in conjunction with faculty mentors.
- ▶ High degree of independence.
- ▶ Great preparation for graduate school and career.

CAMPUS LIFE: NEVER A DULL MOMENT

- ▶ Learning outside of class: academically oriented student organizations, guest lecturers, campus publications, concerts, art exhibitions, theatre, trips off campus and more.
- ▶ More than 150 student-run organizations to suit nearly every interest, from a capella singing to Zen Buddhist meditation.
- ▶ Volunteer and service projects on- and off-campus, including abroad.
- ▶ 13 fraternities and 6 sororities.
- ▶ Diverse religious life programs.
- ▶ Athletics: Division I varsity intercollegiate program, club sports for both men and women, and intramural programs.

RESIDENTIAL COLLEGES: HOUSING OPTIONS WITH AN ACADEMIC TWIST

- ▶ Seven themed programs open to first-year students: arts, environment, global, humanities, language and culture, social justice, and society and technology.
- ▶ Students take a course together, live together, and participate in out-of-class activities such as informal discussions, guest lectures and off-campus trips.

CAREER SERVICES: PREPARATION FOR THE FUTURE

- ▶ Full- or part-time internships at companies, non-profits or governmental agencies.
- ▶ Resume writing and interviewing guidance.
- ▶ Two-day job shadowing externships.
- ▶ On-campus employment expos and off-campus networking nights.

VISIT CAMPUS: SEE BUCKNELL FOR YOURSELF

- ▶ Tours are offered five times daily on weekdays and three times on Saturdays.
- ▶ No appointment is necessary for tours; other options may require reservations.
- ▶ Please go to www.bucknell.edu/admissions/calendar or call (570) 577-1101 for more information about visit options.

Emmitt Field at Holmes Stadium: The home of Bison soccer.



Bucknell Athletics Facilities

THE KENNETH LANGONE ATHLETICS & RECREATION CENTER

The Bucknell University Department of Athletics and Recreation prides itself on setting the standard of excellence when it comes to success both on the playing fields and in the classroom. With 15 Patriot League Presidents' Cups in 19 years, national leadership in graduation rates, 117 Academic All-Americans in 39 years and 114 Patriot League Scholar-Athletes in 19 years, Bucknell is clearly at the head of the class in terms of upholding the scholar-athlete model.

The addition of the Kenneth G. Langone Athletics and Recreation Center, one of the finest collegiate athletics and recreation venues of its kind, ensures the continuation of that success.

The facility enhances each of Bucknell's 27 varsity programs and greatly expands the scope of its growing intramural and recreational sports offerings. A visually appealing structure located along Moore Avenue on the "downhill" side of campus, the Langone Athletics and Recreation Center was designed to reach out to all members of the campus community, including the student body, varsity student-athletes, faculty, staff and alumni.

Three primary venues lie within the facility: the Arthur D. Kinney Jr. Natatorium, the 4,000-seat Gary A. Sojka Pavilion and the Krebs Family Fitness Center. Other features include a new location for the Bucknell Athletics Hall of Fame, a display of Bucknell's Congressional Medal of Honor recipients, a brand new display highlighting Bucknell's all-time Academic All-Americans, a sports medicine and athletic training suite, classrooms, modern offices for coaches and staff and increased locker room space for varsity and recreational athletes.

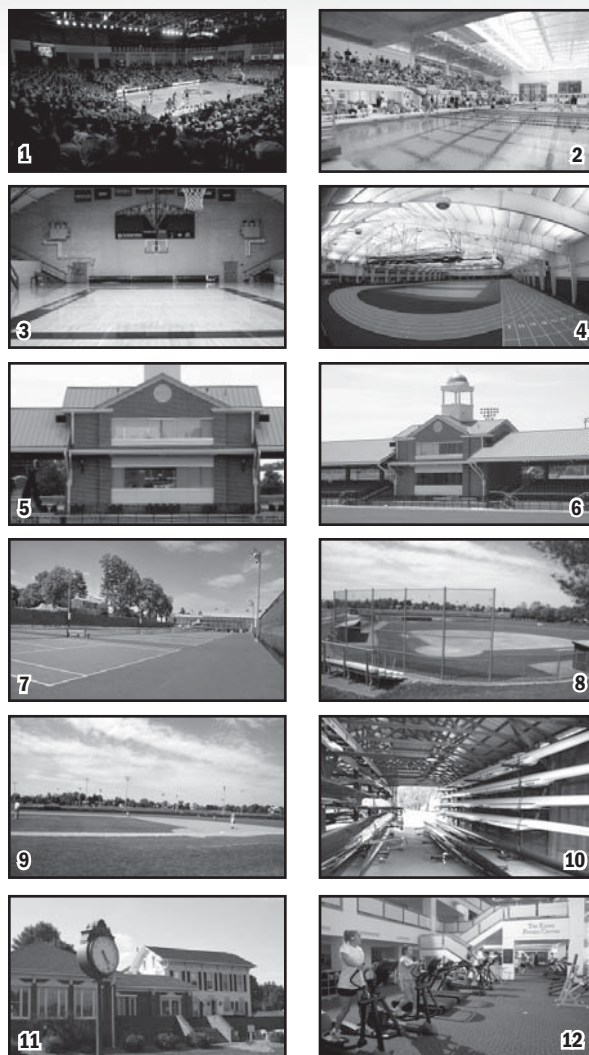
The facility is named in honor of Ken Langone, a 1957 Bucknell graduate who, along with his wife Elaine, pledged \$11 million toward the center's construction. Langone was a member of the university Board of Trustees from 1980 to 1996.

One of the special qualities of the Langone Athletics and Recreation Center is the manner in which it supplements the pre-existing facilities. The construction surrounds Gerhard Fieldhouse and historic Davis Gymnasium, which has been restored as a competition venue for the Bison wrestling and volleyball teams, as well as intramural, recreation and other varsity practice activities.

As Bucknell continues to strive toward its mission of setting the standard of excellence in college athletics, the Langone Athletics and Recreation Center becomes the centerpiece in an already impressive cache of athletics facilities that includes the 13,100-seat Christy Mathewson-Memorial Stadium and its newly installed FieldTurf and 8-lane track surface; the scenic Bucknell Golf Club; Depew Field, the home of the Bison baseball team; the West Fields softball diamond; and Emmitt Field and Graham Field at Holmes Stadium, the new portion of the West Fields project that includes covered grandstand seats, ticket and concession areas, team rooms, a training room and a press box area for soccer, field hockey and women's lacrosse.



OTHER ATHLETICS VENUES



1. Sojka Pavilion (M/W basketball); 2. Kinney Natatorium (M/W swimming & diving, M/W water polo); 3. Davis Gym (volleyball, wrestling); 4. Gerhard Fieldhouse (M/W indoor track & field); 5. Graham Field at Holmes Stadium (field hockey, W lacrosse); 6. Emmitt Field at Holmes Stadium (M/W soccer); 7. Fieldhouse Courts (M/W Tennis); 8. Bison Softball Field; 9. Depew Field (baseball); 10. Bison River Complex (rowing); 11. Bucknell Golf Club; 12. Krebs Fitness Center.